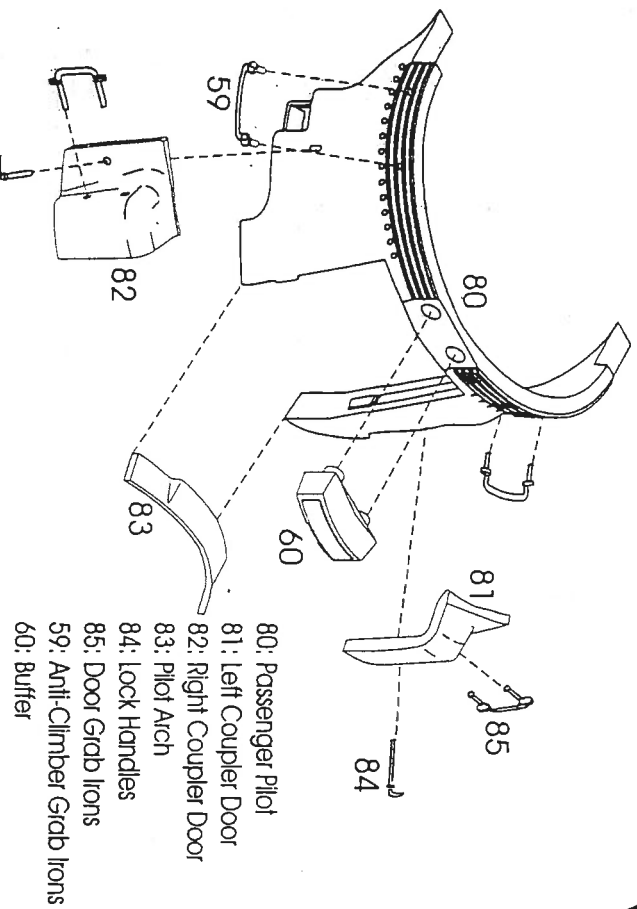


80: Passenger Pilot
 81: Left Coupler Door
 82: Right Coupler Door
 83: Pilot Arch
 84: Lock Handles
 85: Door Grab Irons
 59: Anti-Climber Grab Irons
 60: Buffer

Fig. 5A: F-7A Passenger Pilot (Closed)



80: Passenger Pilot
 81: Left Coupler Door
 82: Right Coupler Door
 83: Pilot Arch
 84: Lock Handles
 85: Door Grab Irons
 59: Anti-Climber Grab Irons
 60: Buffer

Fig. 5B: F-7A Passenger Pilot (Open)

INTERMOUNTAIN RAILWAY COMPANY
 P O BOX 839 - 30 EAST NINTH AVENUE
 LONGMONT, COLORADO 80502

ASSEMBLY INSTRUCTIONS
 F-7A PASSENGER PILOT

Please refer to the drawings on the opposite side of this page when assembling the "passenger pilot" for your F-7A unit locomotive. Note the following:

1. The passenger pilot may be assembled in the open or closed positions. When assembling in the closed position, refer to Figure 5(A). When assembling in the open position, refer to Figure 5(B).
2. When assembling in the closed position, the Doors (81 & 82) occupy the opening in the pilot body, and the Pilot Arch (83) fills the space under the doors.
3. When assembling in the open position, the doors are moved outward so the Lock Handle (84) locators extend through the locator holes in the doors into the oval openings toward the outer edges of the pilot body. To install the pilot arch, turn it 90 degrees so that, when installed, it arches upward into the door opening with the uneven upper surface facing to the back.
4. Be sure to distinguish the Anti-Climber Grab Irons (59) from the other grab irons. They are formed to fit the shape of the anti-climber.