

RED CABOOSE

HO Scale

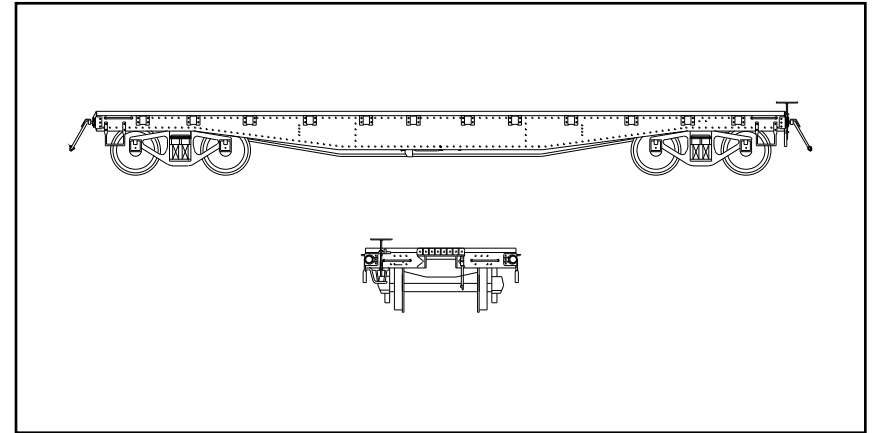
PARTS POLICY

If you break or ruin a part during assembly, or find a part with a manufacturing defect, it will be replaced free of charge by returning the part to the Red Caboose. Subject to stock on hand. Please specify road name when sending in parts.

PARTS LIST:

Part #	Part Description	On Sprue #	Quantity
1	Car Body		1
2	Deck Insert	1	1
3	Main Frame	1	1
4	Sub Frame	1	1
5	Weight		1
6	Stake Pockets	2	24
7	Grab Irons	3	8
8	Air Hose	4	2
9	K Brake	4	1
10	Stirrup Steps	5	4
11	Brake Wheel	5	1
12	Brake Mechanism	5	1
13	Coupler Box Lid	1	2
14	3/16" Screws		2
15	Trucks		2

NOTES



42' Flat Car Kit with Fish Belly Sidesills

THE PROTOTYPE

During World War I the United States Railroad Administration designed a number of cars including two box cars, hoppers, a gondola, tank car, refrigerator car, caboose, passenger cars and a flat car. The box cars and a few of the other designs were built while other designs were set aside, the flat being one set aside.

Within a few years after the war was over railroads began replacing older equipment and looking for designs that would meet their needs. A number of railroads adopted the USRA design with very few changes such as underframe structural changes allowing the load weight to be increased. Other roads shortened, lengthened, narrowed or widened the cars design to suit their needs. Because of these changes, researching what roads had this car would be nearly impossible.

The limited number of photographs available do show that the car (or cars very similar in design) were used by various roads into the 50's and 60's and later depending on the type of service.

This kit depicts the basic USRA design with modifications to the frame increasing the original loaded weight.

A FEW TIPS

Before you begin, read the instructions thoroughly. After reading the instructions, keep in mind this model will assemble quickly if the following rules of assembly are followed:

- Carefully cut all parts from their sprue with a sharp knife.
- Check each part to be sure it is free of flash, remove flash as needed.
- Be sure to remove all sprue marks from the part.
- MOST important**, be sure to clean all holes and surfaces where parts are to be glued together so that the part is paint free.

RED CABOOSE

P.O. Box 250 • Mead, CO 80542

May 1996

HELPFUL TOOLS

Hobby Knife
Small Phillips screw driver
#75 Drill bit

Sharp Blades
Pin vise
Needle nose pliers w/cutter

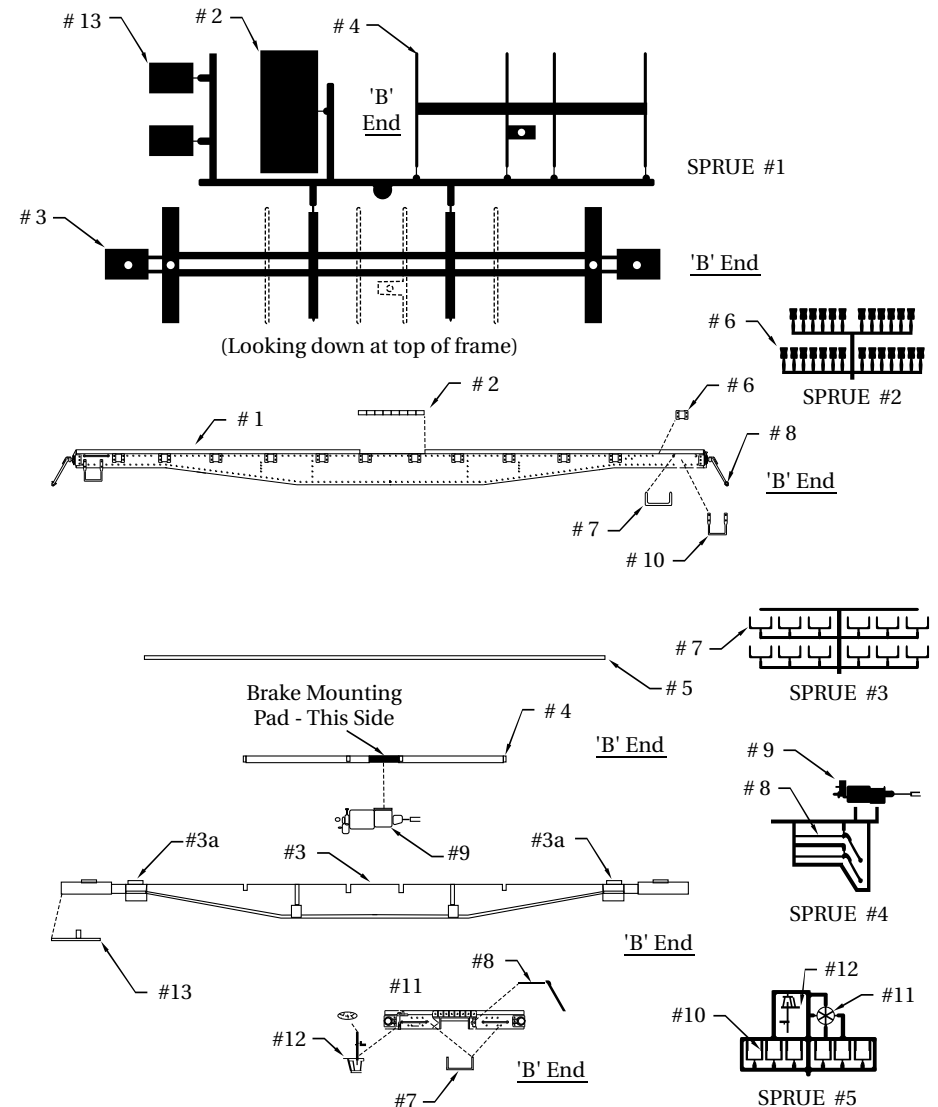
RED CABOOSE

HO Scale 42' Flat Car

ASSEMBLY

Please note that most parts have been silhouetted for easy identification and/or are shown in the exploded view. Part numbers follow the logical assembly sequence. All holes on painted models should be drilled out with a #75 drill for best fit and to clear paint for good part bonding.

1. To flat car body, #1, cut deck insert, #2, from sprue #1 and glue in place as shown.
2. Also from sprue #1 cut the main frame, #3, and the sub frame, #4, and glue together as shown by the dotted lines on the sprue drawing #1 making sure that the "B" end of each part is at the same end. (The sprue drawing shows that you are looking down at the top of the frame.). When dry, glue the weight, #5, in place centered between the frame sides and the two truck screw bosses, #3a.
3. On painted models drill out all body holes using a #75 drill bit. This will remove the paint and allow for a better bond between parts.
4. From sprue #2 carefully remove all stake pockets, #6, and glue in place on the body car.
5. From sprue #3 carefully remove all grab irons, #7, and glue in place on the car body.
6. From sprue #4 carefully remove the two air hoses, #8, and glue in place on each end of the car body.
7. Also from sprue #4 cut the K-brake cylinder, #9, and glue in place to sub frame #4 making sure that the piston rod/Clevis end points to the "B" end of the frame.
8. From sprue #5 cut four stirrup steps, #10, and glue in place as shown.
9. From sprue #5 cut the brake wheel, #11, and the brake mechanism, #12, and glue together. When dry, glue the assembly to the "B" end of the car body as shown.
10. Glue the frame assembly into the car body and set aside to dry.
11. This model has been designed to use **KADEE™** #5 couplers which are recommended. Mount your couplers in the coupler box and secure with press fit box lid #13 found on sprue #1.
12. Using the two 3/16" screws, you can now mount the provided trucks.



KADEE™ is a registered trademark of Kadee Quality Products Co., used with permission.