



March 2024  
DEALER ANNOUNCEMENT



HO  
Scale

# ACF 4650 CUBIC FOOT HOPPER CARS

**ADVANCE RESERVATION**

Seven paint schemes of the ACF 4650 are available for Advance Reservations. Two of the schemes have not been produced before by InterMountain Railway Company. In addition, two of the schemes will feature a new fiberglass style trough hatch. All of the items will have laser sharp decoration, metal knuckle couplers, precision InterMountain metal wheel sets, and multiple road numbers. The Advance Reservation period for these items will end on May 31. Place your Advance Reservations early so that we can schedule production as soon as possible.



HO  
Scale

# GP16 LOCOMOTIVES

**NOW SHIPPING!**

Nine popular paint schemes of the HO GP16 Locomotives will begin shipping the week of April 1st. (This is not an April Fool's joke!) Each item will feature multiple road numbers (when available prototypically). The GP16 locomotives were rebuilt by Seaboard Coast Lines from 1979 through 1982. SCL rebuilt 155 locomotives some of which were later sold to other users. They were used in interchange service through 1992. Some are still being used by short line railroads. These locomotives will be very popular so be sure to confirm your Advance Reservations as soon as possible. Quantities are limited. See the product review from one of the hobbies top contributors at JLWII2001 on YouTube!

N  
Scale

# ACF 4650 CUBIC FOOT HOPPER CARS

**NOW SHIPPING!**

Ten paint schemes of the popular N scale 4650 hopper cars are now shipping! These handsome models feature laser sharp decoration and each model is equipped with knuckle couplers and precision InterMountain metal wheel sets. These hopper cars were produced from the mid 1960's through the mid 1980's and were used in interchange service across the continent to carry many different types of loads. Three of the paint schemes are being produced by InterMountain Railway Company for the first time.



Frank Angstead  
InterMountain Railway Company



# ACF 4650 Cubic Foot 3-Bay Hoppers

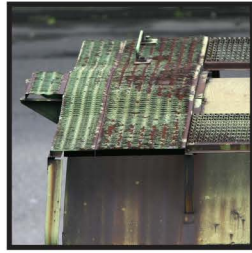
Announced: March 27    Reservations Due By: May 31

Features: Laser Sharp painting and lettering, multiple road numbers, Metal Knuckle Couplers, and InterMountain Precision Metal Wheelsets

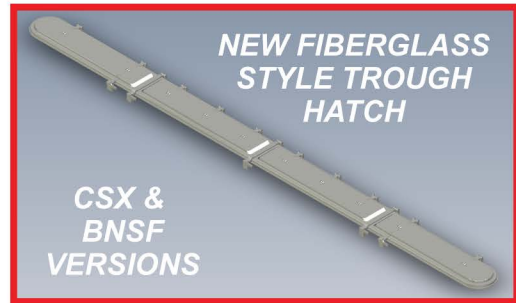
List: \$49.95



Apex Rectangular Style Walkways



Gypsum Diamond Style Walkways



47004



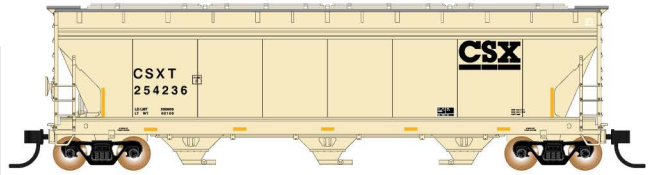
## Cotton Belt - H-100-27 (6 numbers)

Date: NEW 12-71

- Apex Style Walkway
- 3 Elongated Hatches

Car Numbers:	
-17 73581	-18 73605
-19 73672	-20 73714
-21 73828	-22 73925

47045



## CSX - HC-43 (6 numbers)

Date: RPNT 6-96

- Morton Style Walkway
- Fiberglass Trough Hatches

Car Numbers:	
-19 254236	-20 254244
-21 254246	-22 254227
-23 254255	-24 254261

47046



## BNSF - Rebuilt BN (6 numbers)

Date: Post 1996

- Gypsum Style Walkway
- Fiberglass Trough Hatches

Car Numbers:	
-19 424962	-20 424964
-21 425153	-22 425212
-23 425303	-24 425428

47054



## Far Mar Co (6 numbers)

Date: NEW 2-74

- Gypsum Style Walkway
- 3 Elongated Hatches

Car Numbers:	
-13 7409	-14 7414
-15 7421	-16 7427
-17 7433	-18 7438

47056



## SOO Line (6 numbers)

Date: NEW 11-74

- Gypsum Style Walkway
- Corrugated Trough Hatches

Car Numbers:	
-25 74153	-26 74164
-27 74188	-28 74202
-29 74215	-30 74230

470100



## Burlington Northern Early (6 numbers)

Date: NEW 8-71

- Early 1971 Stretched Logo
- Apex Style Walkway
- Corrugated Trough Hatches

Car Numbers:	
-01 458305	-02 458393
-03 458499	-04 458540
-05 458674	-06 458716

470101



## Dry Branch Kaolin ACFX (6 numbers)

Date: NEW 4-73; RBLT 10-96

- Gypsum Style Walkway
- Round Hatches
- Rebuilt by Zwolle Rail Car 1996

Car Numbers:	
-01 48257	-02 48260
-03 48266	-04 48272
-05 48274	-06 48281

# ADVANCE RESERVATION FORM

P.O. Box 839  
Longmont, CO 80501

Phone: (303) 772-1901  
Fax: (303) 532-2352  
Sales: (800) 472-2530

March 2024



Date: \_\_\_\_\_  
Dealer #: \_\_\_\_\_

Customer: \_\_\_\_\_  
Other: \_\_\_\_\_

Telephone #: \_\_\_\_\_  
Contact: \_\_\_\_\_

- HO Scale ACF 4650 Cu. Ft. Hopper Cars -

\*\* RESERVATIONS DUE BY: May 31, 2024 \*\*  
MSRP – \$49.95

<u>Item No.</u>	<u>Reservation Qty</u>	<u>Roadname &amp; Description</u>		
47004	_____	Cotton Belt – H-100-27	6#s	
47045	_____	CSX – HC-43	6#s	
47046	_____	BNSF – Rebuilt ex BN	6#s	
47054	_____	Far Mar Co	6#s	
47056	_____	SOO Line	6#s	
470100	_____	Burlington Northern – Early	6#s	<b>NEW!</b>
470101	_____	Dry Branch Kaolin ACFX	6#s	<b>NEW!</b>

March 27, 2024

Visit our website for more info:  
[www.intermountain-railway.com](http://www.intermountain-railway.com)

DEALER MEMORANDUM  
NUMBER 24-003



P.O. Box 839

Longmont, Colorado 80502

**HO SCALE**  
FULLY ASSEMBLED MODELS

**Items will start shipping the week of April 1st!**

# GP16 LOCOMOTIVES

These GP16 locomotives will be manufactured with finely molded parts that have been designed to reproduce railroad specific details. All locomotives are factory equipped with an ESU LokSound sound decoder or an ESU LokPilot non-sound DCC decoder. An optional DC only plug is available upon request.

**ALL  
NEW!**

**Suggested Retail Price:**  
DCC: \$249.95  
DCC & Sound: \$319.95



## FAMILY LINES SYSTEM (STOCK #49826(S))

These locomotives are gray with the large SCL/LN herald on the sides with the words Family Line System in black. The stripes are red and yellow.

STOCK / LOCO #
-01 4702
-02 4710
-03 4762
-04 4798



## RJ CORMAN RAILROAD COMPANY (STOCK #49827(S))

These locomotives are red and gray. The RJ Corman lettering is white.

STOCK / LOCO #
-01 1607
-02 1739
-03 1806
-04 1829



## THE INDIANA RAILROAD (STOCK #49828(S))

These locomotives are gray with white lettering and red & white nose stripes. The large "I" is red.

STOCK / LOCO #
-01 1718
-02 1753
-03 1809
-04 1813



## CSX - BLUE & GRAY (STOCK #49829(S))

These locomotives are gray and blue with blue lettering.

STOCK / LOCO #
-01 1711
-02 1753
-03 1798
-04 1834



## LOUISVILLE & INDIANA (STOCK #49832(S))

These locomotives are green with a large yellow stripe and yellow sills.

STOCK / LOCO #
-01 1607
-02 1610

March 27, 2024

Visit our website for more info:  
[www.intermountain-railway.com](http://www.intermountain-railway.com)

DEALER MEMORANDUM  
NUMBER 24-004



P.O. Box 839  
Longmont, Colorado 80502

**HO SCALE**  
FULLY ASSEMBLED MODELS

**Items will start shipping the week of April 1st!**

# GP16 LOCOMOTIVES

These GP16 locomotives will be manufactured with finely molded parts that have been designed to reproduce railroad specific details. All locomotives are factory equipped with an ESU LokSound sound decoder or an ESU LokPilot non-sound DCC decoder. An optional DC only plug is available upon request.

**ALL  
NEW!**

**Suggested Retail Price:**  
**DCC: \$249.95**  
**DCC & Sound: \$319.95**



**UNITED STATES ARMY**  
**(STOCK #49834(S))**

These locomotives are red with yellow lettering and black sills.

STOCK / LOCO #

-01 4630  
-02 4633  
-03 4635  
-04 4636



**ABERDEEN, CAROLINA & WESTERN**  
**(STOCK #49835(S))**

These locomotives are green with a large beige stripe and sill. The smaller stripes are red and the underframe & trucks are silver.

STOCK / LOCO #

-01 1601  
-02 1721



**PIONEER RAILCORP**  
**(STOCK #49838(S))**

These locomotives are black with yellow lettering and stripes.

STOCK / LOCO #

-01 1607  
-02 1608  
-03 1614



**SANTA FE SOUTHERN**  
**(STOCK #49841(S))**

These locomotives are yellow with a red upper half. The trucks are silver with a black underframe.

STOCK / LOCO #

-01 93

March 27, 2024

Visit our website for more info:  
[www.intermountain-railway.com](http://www.intermountain-railway.com)

DEALER MEMORANDUM  
NUMBER 24-005



P.O. Box 839

Longmont, Colorado 80502

**N SCALE**  
FULLY ASSEMBLED MODELS

**Items will start shipping the week of April 1st!**

## 4650 CU. FT. HOPPERS

The ACF 4650 Center Flow covered hopper was produced by American Car & Foundry starting in the mid 60's. Production continued into the mid 80's. Its unique design with no center sill and curved roof and body sides provided a car that "Filled Fuller and Emptied Emitter" than cars with center sills and flat sides. They were used for hauling grains and lighter weight minerals. In later years many were pushed into salt service. These cars were popular with many Class 1 railroads and a large number were used in lease services bearing ACFX reporting marks.

**Suggested Retail Prices: \$36.95**



### WESTERN PACIFIC - FEATHER RIVER (STOCK #67033)

These hopper cars are gray with black lettering.

Date: BLT 4-67  
STOCK / CAR #  
-13 11753  
-14 11756  
-15 11765  
-16 11777  
-17 11786  
-18 11793



### MONTANA RAIL LINK (STOCK #67036)

These hopper cars are blue with white lettering.

Date: 11-89  
STOCK / CAR #  
-19 50002  
-20 50013  
-21 50036  
-22 50064  
-23 50083  
-24 50091



### MILWAUKEE ROAD (STOCK #67042)

These hopper cars are gray with black lettering.

Date: NEW 3-68  
STOCK / CAR #  
-01 99995  
-02 99996  
-03 99997  
-04 99998  
-05 99999



### GOLDEN WEST (STOCK #67050)

These hopper cars are blue with yellow lettering.

Date: 6-90  
STOCK / CAR #  
-13 CRLE 524501  
-14 CRLE 524705  
-15 CRLE 525013  
-16 GVSR 525010  
-17 GVSR 525035  
-18 GVSR 525054



### GREAT NORTHERN (STOCK #67051)

These hopper cars are gray with black lettering.

Date: NEW 11-66  
STOCK / CAR #  
-19 171728  
-20 171773  
-21 171842  
-22 171880  
-23 171939  
-24 171975

March 27, 2024

Visit our website for more info:  
[www.intermountain-railway.com](http://www.intermountain-railway.com)

DEALER MEMORANDUM  
NUMBER 24-006



P.O. Box 839  
Longmont, Colorado 80502

**N SCALE**  
FULLY ASSEMBLED MODELS

**Items will start shipping the week of April 1st!**

## 4650 CU. FT. HOPPERS

The ACF 4650 Center Flow covered hopper was produced by American Car & Foundry starting in the mid 60's. Production continued into the mid 80's. Its unique design with no center sill and curved roof and body sides provided a car that "Filled Fuller and Emptied Emitter" than cars with center sills and flat sides. They were used for hauling grains and lighter weight minerals. In later years many were pushed into salt service. These cars were popular with many Class 1 railroads and a large number were used in lease services bearing ACFX reporting marks.

**Suggested Retail Prices: \$36.95**



**NORFOLK SOUTHERN**  
**(STOCK #67053)**

These hopper cars are gray with black lettering.

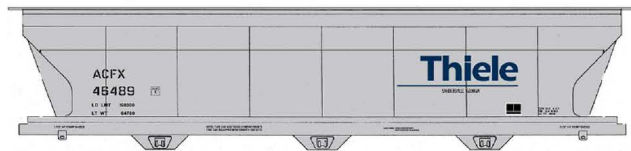
Date: 8-92  
STOCK / CAR #  
-07 251066  
-08 251079  
-09 251087  
-10 251118  
-11 251139  
-12 251145



**SOO LINE**  
**(STOCK #67056)**

These hopper cars are light gray with green lettering. The wheat stock is yellow.

Date: BLT 11-74  
STOCK / CAR #  
-19 74155  
-20 74172  
-21 74189  
-22 74203  
-23 74211  
-24 74228



**THIELE - ACFX**  
**(STOCK #67088)**

These hopper cars are gray with black lettering. The Thiele logo is blue.

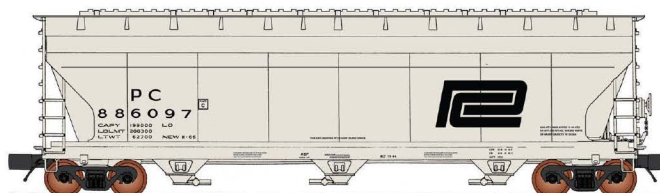
Date: NEW 5-82  
STOCK / CAR #  
-01 46484  
-02 46489  
-03 46491  
-04 46493  
-05 46502  
-06 46505



**LINCOLN GRAIN**  
**(STOCK #67090)**

These hopper cars are gray with black lettering. The Lincoln Grain graphic is yellow, white, and black.

Date: BLT 10-80  
STOCK / CAR #  
-07 1063  
-08 1067  
-09 1071  
-10 1078  
-11 1080  
-12 1087



**PENN CENTRAL**  
**(STOCK #67096)**

These hopper cars are very light gray with black lettering.

Date: 7-69  
STOCK / CAR #  
-01 886729  
-02 886736  
-03 886784  
-04 886800  
-05 886812  
-06 886821

# ORDER FORM

P.O. Box 839  
Longmont, CO 80501

Phone: (303) 772-1901  
Fax: (303) 532-2352  
Sales: (800) 472-2530



March 2024

Date: \_\_\_\_\_  
Dealer #: \_\_\_\_\_

Customer: \_\_\_\_\_  
Other: \_\_\_\_\_

Telephone #: \_\_\_\_\_  
Contact: \_\_\_\_\_

Expected Shipping Date: April 1st!

## - HO Scale GP16 Locomotives -

**\*\* RESERVATIONS DUE BY: March 31, 2024 \*\***  
MSRP – \$249.95 DCC | \$319.95 DCC w/ Sound

<u>Item No.</u>	<u>Reservation Qty</u>	<u>Roadname &amp; Description</u>		
49826/49826S	_____/____	Family Lines System	4#s	<b>NEW!</b>
49827/49827S	_____/____	RJ Corman Railroad Company	4#s	<b>NEW!</b>
49828/49828S	_____/____	The Indiana Railroad	4#s	<b>NEW!</b>
49829/49829S	_____/____	CSX - Blue & Gray	4#s	<b>NEW!</b>
49832/49832S	_____/____	Louisville & Indiana	2#s	<b>NEW!</b>
49834/49834S	_____/____	United States Army	4#s	<b>NEW!</b>
49835/49835S	_____/____	Aberdeen, Carolina & Western	2#s	<b>NEW!</b>
49838/49838S	_____/____	Pioneer Railcorp	3#s	<b>NEW!</b>
49841/49841S	_____/____	Santa Fe Southern	1#s	<b>NEW!</b>

## - N Scale 4650 Cubit Foot Rib-Sided 3-Bay Covered Hoppers -

MSRP – \$32.95

<u>Item No.</u>	<u>Order Qty</u>	<u>Roadname &amp; Description</u>		
67033	_____	Western Pacific - Feather River	6#s	
67036	_____	Montana Rail Link	6#s	
67042	_____	Milwaukee Road	5#s	
67050	_____	Golden West	6#s	
67051	_____	Great Northern	6#s	
67053	_____	Norfolk Southern	6#s	
67056	_____	SOO Line	6#s	
67088	_____	Thiele - ACFX	6#s	<b>NEW!</b>
67090	_____	Lincoln Grain	6#s	
67096	_____	Penn Central	6#s	<b>NEW!</b>